



ANNUAL BULL SALE • MARCH 21 • 1 PM

Westmoreland, Kansas
Featuring 75 Spring and Fall Bulls



TERMS OF THE SALE

Sale Managed by:



1019 Waterwood Pkwy, Unit D
Edmond, OK 73034
Office: (405) 840-5461
www.mcsauction.com

Sale Staff

Matt Sims - Auctioneer
(405) 641-6081
Guy Pevery - High Plains Journal
(785) 456-4390
Andrew Sylvester - Kansas Stockman
(785) 633-5512
Justin Stout - The Stock Exchange
(913) 645-5136

Buyers unable to attend the sale may send their bids to the sale manager or sale staff.

Sale Day Phones

Ron Hinrichsen (785) 770-0222
Lynne Hinrichsen (785) 770-0014
Bill Hinrichsen (785) 770-2045
Matt Sims (405) 641-6081
Wayne Dorrell (317) 946-6538
Dusty Dorrell (317) 341-1633

Directions

- 25 miles north of I-70 on HWY 99
- From Westmoreland, go south 2 miles on HWY 99 to Christian Road; go 1/4 mile on Christian Road, second house on the right.
- From Wamego, go approximately 11 miles north on HWY 99, turn left at mile marker 187 onto Christian Road; second house on the right.

Accommodations

Super 8 Motel - Wamego, KS (785) 458-8888
Best Western - Manhattan, KS (785) 537-8300
Comfort Inn - Manhattan, KS (785) 770-8000

Herd Health

Cattle will be accompanied by proper health certificates for immediate shipment.

Insurance

Your cattle will be insured at the clerk's desk.

Terms and Conditions

All cattle are to be settled for sale day unless prior arrangements have been made. The cattle sell under the terms and conditions of the American Angus Association.

Announcements

A supplemental update sheet will be available sale day with up-to-date information. All announcements made from the auction block take precedence over printed matter in this sale book.

Bull Guarantee

All bulls are guaranteed by R & L Angus and Dorrell Farms against breeding injury for the first breeding season. Breeding season is defined as the 90-day period following the first turnout of the bulls. Breeding injury is defined as injury to the penis or preputial tear with inability to extend. If a replacement bull is available, he will be provided or if the buyer prefers, credit toward one bull will be given in the following year's sale, less salvage of the injured bull, less \$10 per day the bull has been in use since the first turnout. Please notify us as soon as possible should injury occur and prior to the injured bull being sold for salvage. Guarantee ends August 31, 2010.

Acknowledgements

Advertising and catalog prepared by MCS Auction, LLC and Specialized Marketing.

Catalog produced by Dream Designs
Tracy McMurphy - 602-549-4509
tracymcmurphy@hotmail.com

Cattle Viewing

Cattle may be viewed at the ranch after March 10. Before that please contact us for an appointment.

WELCOME FRIENDS

Welcome to the R&L Angus annual bull sale. We have provided bulls and service to the Angus industry for over 20 years and a lifetime of dedication to the beef industry. Our family has worked hard to build a program of Angus genetics that have the combination of performance, maternal, carcass and phenotype. We invite you to share in this offering as we are pleased to present some of the top proven genetics in the Angus business.

Once again we have partnered with Wayne and Dusty Dorrell from Dorrell Farms in Spencer, Indiana. They have sent an exceptional group of bulls to offer with ours. The Dorrells have an outstanding cow herd through an extensive embryo transfer program that utilizes some of the top donors and cow families in the country. Please welcome them back this year.

We listen to our customers and meet the needs of their individual programs. There is a great assortment of bulls to fit your program. We have an outstanding set of moderate framed, thicker made bulls as well as stouter, growthier bulls. We always have a great selection of bulls for heifers as well as cows.

The bulls have been fed at Abitz Land and Cattle Co., just up the road from our ranch. Bill and Justin Abitz have done an excellent job getting the bulls in the right condition for you. The bulls have been fed a balanced ration to gain 3.5 lbs. per day. We feel the bulls are in the best condition to work for you. All bulls have passed a semen and breeding soundness exam and are AM and NH free. Ultrasound data will be available on sale day.

We look forward to seeing you on March 21st . Please call us if you have any questions.

Sincerely,

Ron & Lynne Hinrichsen
1380 Christian Road
Westmoreland, KS 66549
(785) 457-2848
rlangus@bluevalley.net
www.rlangus.com



Dear Cattlemen,

Welcome to the 2010 R&L Bull Sale. R&L and their sale guest Dorrell Farms are dedicated to providing sound, functional bulls that are ready to go to work for you. This offering was selected to meet the needs of the commercial cattlemen as well as a purebred breeder. Our industry is a fast evolving environment and these breeders are working diligently to stay abreast by utilizing superior genetics to help meet your demands.

Whether you look to Angus cattle for calving ease, weaning or yearling growth, carcass quality or a combination of all these, they offer genetics to fit your needs. The Hinrichsen and Dorrell families realize that you have many options with your bull selection. They hope to continue to be your chosen source by providing you with an honest product as well as outstanding customer service.

I believe that they have again produced a set of bulls with the individual performance, genetic predictability and proven heritage to suit your needs. We look forward to seeing you on Sunday, March 21 and, as always, if I can help in any way prior to or at sale time, please don't hesitate to call.

Sincerely,
Matt Sims

R & L ANGUS ANNUAL BULL SALE

LOT 1



SPRING BULLS



BC Big Daddy 702-5



1 R & L BIG DADDY 9013

Birth Date: 02/04/2009 AAA: 16450471 Tattoo: 9013

O C C Emblazon 854E

BC Big Daddy 702-5

Gibbet Hill Mignonne E37

Kahn Broadband RA 94L

R & L Everelda Entense 7515

E R Everelda Entense K217

D H D Traveler 6807

Dixie Erica of C H 1019

Papa Equator 2928

Gibbet Hill Mignonne TR 29

Bon View Bando 598

Shadybrook Ever Entense 491G

S A F Focus of E R

Sitz Everelda Entense 023

CED	BW	WW	YW	Milk	Marb	REA	\$W	\$F	\$G	\$B
-	1.4	60	103	21	-	-	30.85	38.41	-	-
Act. BW	Adj. WW	Adj. YW	Adj. IMF	Adj. REA	SC					
74 (98)	750 (114)	1345 (112)	-	-	-					

Sired by the popular BC Big Daddy, 9013 is a powerfully constructed, big topped, stout hipped bull, with a balanced set of genetic predictors to match his visual advantages. 9013 blends an impressive profile with structural correctness and added body volume. Backed by a pedigree to be productive and functional, this young herd sire is designed to meet any operation's goals. Ranks in top 3% for WW.

2 R & L BIG DADDY 9011

Birth Date: 02/02/2009 AAA: 16450470 Tattoo: 9011

O C C Emblazon 854E

BC Big Daddy 702-5

Gibbet Hill Mignonne E37

Hyline Right Time 338

R & L Everelda Entense 7512

Masterfare Entense 3035

D H D Traveler 6807

Dixie Erica of C H 1019

Papa Equator 2928

Gibbet Hill Mignonne TR 29

Leachman Right Time

Hyline Pride 265

B/R New Design 323

Baar Everelda Entense 9225

CED	BW	WW	YW	Milk	Marb	REA	\$W	\$F	\$G	\$B
-	2.0	62	105	20	.29	.32	30.18	39.68	23.10	50.30
Act. BW	Adj. WW	Adj. YW	Adj. IMF	Adj. REA	SC					
74 (98)	701 (106)	1259 (105)	-	-	-					

Here is a high growth, performance driven bull with the look and body type of his sire. Deep, sound and powerful makes this numerically strong sire a multi trait enhancer. Ranks in the top 2% for WW and top 20% for \$F and \$B.

R & L ANGUS ANNUAL BULL SALE

3

R&L BIG DADDY 9019

Birth Date: 01/31/2009 AAA: 16541449 Tattoo: 9019

O C C Emblazon 854E

BC Big Daddy 702-5

Gibbet Hill Mignonne E37

R&L Silveridge Broadband 427

R & L Commodore 630

R&L Commodore 409

D H D Traveler 6807

Dixie Erica of C H 1019

Papa Equator 2928

Gibbet Hill Mignonne TR 29

Kahn Broadband R A 94L

Silver Ridge Elba R&L

B/R New Frontier 095

R&L Commodore Medallion 020

CED	BW	WW	YW	Milk	Marb	REA	\$W	\$F	\$G	\$B
7	2.1	55	96	17	.40	.26	27.17	33.23	28.07	52.29
Act. BW	Adj. WW	Adj. YW	Adj. IMF	Adj. REA	SC					
80 (101)	689 (105)	1265 (106)	-	-	-					

Ranks in the top 10% for WW and top 20% for \$W and \$B.

5

R&L BASELINE 9012

Birth Date: 01/26/2009 AAA: 16541447 Tattoo: 9012

O C C Emblazon 854E

DCC Baseline 511

E&B Lady Popatop 351

T A M Hydro 1171

R&L Emblem Erica 751

R&L Emblem Erica 401

D H D Traveler 6807

Dixie Erica of C H 1019

RR Popatop 0600

E&B Everelda Queen 170

K M R Hero 299

T A M Blackbird 1168

Car Tracker 904

R&L Emblem Erica 215

CED	BW	WW	YW	Milk	Marb	REA	\$W	\$F	\$G	\$B
9	1.4	42	73	21	.12	.01	27.47	15.77	14.16	20.17
Act. BW	Adj. WW	Adj. YW	Adj. IMF	Adj. REA	SC					
78 (103)	653 (99)	1155 (96)	-	-	-					

4

R & L BASELINE 9020

Birth Date: 02/02/2009 AAA: 16455704 Tattoo: 9020

O C C Emblazon 854E

DCC Baseline 511

E&B Lady Popatop 351

S A V 8180 Traveler 004

R & L Blackcap 7522

W A Blackcap C9 811

D H D Traveler 6807

Dixie Erica of C H 1019

RR Popatop 0600

E&B Everelda Queen 170

Sitz Traveler 8180

Boyd Forever Lady 8003

Leachman Explorer

W C C Blackcap C9

CED	BW	WW	YW	Milk	Marb	REA	\$W	\$F	\$G	\$B
-	3.3	48	83	20	.08	.09	24.59	23.06	10.33	24.82
Act. BW	Adj. WW	Adj. YW	Adj. IMF	Adj. REA	SC					
85 (112)	706 (107)	1210 (101)	-	-	-					

Phenotypically, 9020 is a favorite of many. Yet, being backed by a petdigree full of breed legends, this young sire combines both the genetic and visual advantages to be an outstanding herd sire prospect. 9020 is powerfully built from the ground up, being heavy boned, stout hipped and high volumed with added width and dimension throughout. Don't miss the opportunity to own this exciting sale feature.



R & L ANGUS ANNUAL BULL SALE

LOT 6



Masterfare Entense 3035

Masterfare Entense 3035 is a favorite here at R&L. She is one of the most prolific females in production at R&L with impressive progeny ratios of BR 1@96, WR 1@116, YR 1@113, %IMF 68@97 and RE 68@100. Her proven genetic traits and consistent phenotypic make up proves her offspring to be among favorites each year and her influence is prominent in this year's offering with twelve sons (lots 8-16 and 72-74) and five grandsons (lots 6-7,51-52, and 61) in the sale.

6

R & L MARATHON 9028

Birth Date: 02/13/2009 AAA: 16450469 Tattoo: 9028

B C Marathon 7022

BC Marathon Black Bird 306-6

BC Blkbird Girl 207 854E 306

BR Midland

R & L Everelda Entense 615

Masterfare Entense 3035

O C C Kirby 633K
Gibbet Hill Mignonne E37
O C C Emblazon 854E
CAF Blackbird Girl P 97

Twin Valley Precision E161
BR Royal Lass 7036-19
B/R New Design 323
Baar Everelda Entense 9225

CED	BW	WW	YW	Milk	Marb	REA	\$W	\$F	\$G	\$B
4	3.3	59	101	12	.35	.23	24.11	36.75	27.02	44.82
Act. BW	Adj. WW	Adj. YW	Adj. IMF	Adj. REA	SC					
80 (101)	707 (107)	1310 (109)	-	-	-					

9028 offers extra length and extension while being a powerful son of the newly popular BC Marathon Blackbird. Ranks in the top 4% for WW, and top 20% for YW.

7

R & L MARATHON 9048

Birth Date: 03/21/2009 AAA: 16390268 Tattoo: 9048

B C Marathon 7022

BC Marathon Black Bird 306-6

BC Blkbird Girl 207 854E 306

BR Midland

R & L Everelda Entense 620

Masterfare Entense 3035

O C C Kirby 633K
Gibbet Hill Mignonne E37
O C C Emblazon 854E
CAF Blackbird Girl P 97

Twin Valley Precision E161
BR Royal Lass 7036-19
B/R New Design 323
Baar Everelda Entense 9225

CED	BW	WW	YW	Milk	Marb	REA	\$W	\$F	\$G	\$B
3	3.7	53	92	11	.41	.29	21.51	29.99	28.85	44.93
Act. BW	Adj. WW	Adj. YW	Adj. IMF	Adj. REA	SC					
87 (107)	677 (94)	1175 (98)	-	-	-					

Ranks is the top 15% for WW.

8

R&L EMBLAZON 9509

Birth Date: 02/06/2009 AAA: 16555020 Tattoo: 9509

D H D Traveler 6807

O C C Emblazon 854E

Dixie Erica of C H 1019

B/R New Design 323

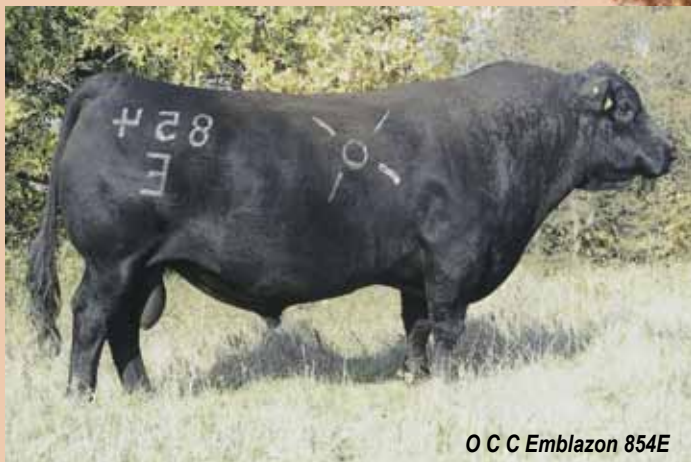
Masterfare Entense 3035

Baar Everelda Entense 9225

Q A S Traveler 23-4
Bemindful Maid D H D 0807
PBC 707 1M F0203
Dixie Erica of C H 615

B/R New Design 036
B/R Ruby of Tiffany 155
Gdar SVF Russ 184B
Sitz Everelda Entense 1137

CED	BW	WW	YW	Milk	Marb	REA	\$W	\$F	\$G	\$B
8	2.3	52	87	14	.23	.29	26.48	25.44	24.90	35.19
Act. BW	Adj. WW	Adj. YW	Adj. IMF	Adj. REA	SC					
74 (100)	520 (100)	1062 (100)	-	-	-					



O C C Emblazon 854E

9

R&L EXT 9511

Birth Date: 02/06/2009 AAA: 16549190 Tattoo: 9511

Emulation N Bar 5522

N Bar Emulation EXT

N Bar Primrose 2424

B/R New Design 323

Masterfare Entense 3035

Baar Everelda Entense 9225

Emulation 31
Ankony 8F78 Lass 8F275
Emulation 31
Primrose N Bar 9962

B/R New Design 036
B/R Ruby of Tiffany 155
Gdar SVF Russ 184B
Sitz Everelda Entense 1137

CED	BW	WW	YW	Milk	Marb	REA	\$W	\$F	\$G	\$B
6	2.8	49	86	18	.22	.18	24.91	25.60	18.21	40.07
Act. BW	Adj. WW	Adj. YW	Adj. IMF	Adj. REA	SC					
85 (ET)	575 (ET)	1148 (ET)	-	-	-					



LOT 9

10

R & L EXT 9514

Birth Date: 02/07/2009 AAA: 16549184 Tattoo: 9514

Emulation N Bar 5522

N Bar Emulation EXT

N Bar Primrose 2424

B/R New Design 323

Masterfare Entense 3035

Baar Everelda Entense 9225

Emulation 31
Ankony 8F78 Lass 8F275
Emulation 31
Primrose N Bar 9962

B/R New Design 036
B/R Ruby of Tiffany 155
Gdar SVF Russ 184B
Sitz Everelda Entense 1137

CED	BW	WW	YW	Milk	Marb	REA	\$W	\$F	\$G	\$B
6	2.8	49	86	18	.22	.18	24.91	25.60	18.21	40.07
Act. BW	Adj. WW	Adj. YW	Adj. IMF	Adj. REA	SC					
80 (ET)	591 (ET)	1161 (ET)	-	-	-					



N Bar Emulation EXT

11

R&L EXT 9522

Birth Date: 02/12/2009 AAA: 16549196 Tattoo: 9522

Emulation N Bar 5522

N Bar Emulation EXT

N Bar Primrose 2424

B/R New Design 323

Masterfare Entense 3035

Baar Everelda Entense 9225

Emulation 31
Ankony 8F78 Lass 8F275
Emulation 31
Primrose N Bar 9962

B/R New Design 036
B/R Ruby of Tiffany 155
Gdar SVF Russ 184B
Sitz Everelda Entense 1137

CED	BW	WW	YW	Milk	Marb	REA	\$W	\$F	\$G	\$B
6	2.8	49	86	18	.22	.18	24.91	25.60	18.21	40.07
Act. BW	Adj. WW	Adj. YW	Adj. IMF	Adj. REA	SC					
85 (ET)	514 (ET)	1050 (ET)	-	-	-					



R & L ANGUS ANNUAL BULL SALE

12

R&L EXT 9523

Birth Date: 02/12/2009 AAA: 16549197 Tattoo: 9523
 Emulation N Bar 5522
N Bar Emulation EXT
 N Bar Primrose 2424
 B/R New Design 323
Masterfare Entense 3035
 Baar Everelda Entense 9225

Emulation 31
 Ankony 8F78 Lass 8F275
 Emulation 31
 Primrose N Bar 9962
 B/R New Design 036
 B/R Ruby of Tiffany 155
 Gdar SVF Russ 184B
 Sitz Everelda Entense 1137

CED	BW	WW	YW	Milk	Marb	REA	\$W	\$F	\$G	\$B
6	2.8	49	86	18	.22	.18	24.91	25.60	18.21	40.07
Act. BW	Adj. WW	Adj. YW	Adj. IMF	Adj. REA	SC					
80 (ET)	559 (ET)	1050 (ET)	-	-	-					

13

R&L EXT 9524

Birth Date: 02/14/2009 AAA: 16549198 Tattoo: 9524
 Emulation N Bar 5522
N Bar Emulation EXT
 N Bar Primrose 2424
 B/R New Design 323
Masterfare Entense 3035
 Baar Everelda Entense 9225

Emulation 31
 Ankony 8F78 Lass 8F275
 Emulation 31
 Primrose N Bar 9962
 B/R New Design 036
 B/R Ruby of Tiffany 155
 Gdar SVF Russ 184B
 Sitz Everelda Entense 1137

CED	BW	WW	YW	Milk	Marb	REA	\$W	\$F	\$G	\$B
6	2.8	49	86	18	.22	.18	24.91	25.60	18.21	40.07
Act. BW	Adj. WW	Adj. YW	Adj. IMF	Adj. REA	SC					
87 (ET)	619 (ET)	1150 (ET)	-	-	-					

GAR Predestined



14

R&L PREDESTINED 9108

Birth Date: 01/16/2009 AAA: 16549303 Tattoo: 9108
 B/R New Design 036
G A R Predestined
 G A R Ext 4206
 B/R New Design 323
Masterfare Entense 3035
 Baar Everelda Entense 9225

V D A R New Trend 315
 B/R Blackcap Empress 76
 N Bar Emulation EXT
 G A R 6807 Traveler 1432
 B/R New Design 036
 B/R Ruby of Tiffany 155
 Gdar SVF Russ 184B
 Sitz Everelda Entense 1137

CED	BW	WW	YW	Milk	Marb	REA	\$W	\$F	\$G	\$B
6	3.9	54	96	23	.69	.43	24.17	33.62	35.69	61.45
Act. BW	Adj. WW	Adj. YW	Adj. IMF	Adj. REA	SC					
78 (ET)	523 (ET)	985 (ET)	-	-	-					

Ranks in the top 4% for \$B, top 5% for \$G, top 10% for Marb and RE, top 15% for WW and YW, and top 20% for \$F.

15

R&L PREDESTINED 9115

Birth Date: 01/24/2009 AAA: 16549304 Tattoo: 9115
 B/R New Design 036
G A R Predestined
 G A R Ext 4206
 B/R New Design 323
Masterfare Entense 3035
 Baar Everelda Entense 9225

V D A R New Trend 315
 B/R Blackcap Empress 76
 N Bar Emulation EXT
 G A R 6807 Traveler 1432
 B/R New Design 036
 B/R Ruby of Tiffany 155
 Gdar SVF Russ 184B
 Sitz Everelda Entense 1137

CED	BW	WW	YW	Milk	Marb	REA	\$W	\$F	\$G	\$B
6	3.9	54	96	23	.69	.43	24.17	33.62	35.69	61.45
Act. BW	Adj. WW	Adj. YW	Adj. IMF	Adj. REA	SC					
78 (ET)	586 (ET)	1088 (ET)	-	-	-					

Ranks in the top 4% for \$B, top 5% for \$G top 10% for Marb and RE, top 15% for WW and YW, and top 20% for \$F.

16

R&L PREDESTINED 9122

Birth Date: 01/28/2009 AAA: 16549308 Tattoo: 9122
 B/R New Design 036
G A R Predestined
 G A R Ext 4206
 B/R New Design 323
Masterfare Entense 3035
 Baar Everelda Entense 9225

V D A R New Trend 315
 B/R Blackcap Empress 76
 N Bar Emulation EXT
 G A R 6807 Traveler 1432
 B/R New Design 036
 B/R Ruby of Tiffany 155
 Gdar SVF Russ 184B
 Sitz Everelda Entense 1137

CED	BW	WW	YW	Milk	Marb	REA	\$W	\$F	\$G	\$B
6	3.9	54	96	23	.69	.43	24.17	33.62	35.69	61.45
Act. BW	Adj. WW	Adj. YW	Adj. IMF	Adj. REA	SC					
80 (ET)	423 (ET)	954 (ET)	-	-	-					

Ranks in the top 4% for \$B, top 5% for \$G, top 10% for Marb and RE, top 15% for WW and YW, and top 20% for \$F.



R & L ANGUS ANNUAL BULL SALE

17

R&L AB PREDESTINED 9114

Birth Date: 01/21/2009 AAA: 16549309 Tattoo: 9114

B/R New Design 036

G A R Predestined

G A R Ext 4206

R&L Silveridge Broadband 427

R & L Emulation 626

R&L Emulation 411

V D A R New Trend 315
B/R Blackcap Empress 76
N Bar Emulation EXT
G A R 6807 Traveler 1432
Kahn Broadband R A 94L
Silver Ridge Elba R&L
R A Genetic Trend
N F Emulation 55M

CED	BW	WW	YW	Milk	Marb	REA	\$W	\$F	\$G	\$B
5	3.4	50	95	23	.53	.38	22.78	34.18	29.05	54.96
Act. BW	Adj. WW	Adj. YW	Adj. IMF	Adj. REA	SC					
80 (103)	676 (109)	1274 (114)	-	-	-					

Predestined is one of the most proven sires in the breed. His son, 9114 offers the same look and muscle shape while being sound structured and deep bodied. Ranks in the top 15% for RE and \$B, and top 20% for Marb.



LOT 17

18

R&L PREDESTINED 9517

Birth Date: 02/09/2009 AAA: 16549300 Tattoo: 9517

B/R New Design 036

G A R Predestined

G A R Ext 4206

Leachman Right Time

7 B H Varteny 919

7 B H Varteny 750

V D A R New Trend 315
B/R Blackcap Empress 76
N Bar Emulation EXT
G A R 6807 Traveler 1432
N Bar Emulation EXT
Leachman Erica 0025
Leachman Jefe
Rev Rose of C H 7084

CED	BW	WW	YW	Milk	Marb	REA	\$W	\$F	\$G	\$B
3	4.8	52	91	23	.59	.28	25.12	29.38	27.81	53.25
Act. BW	Adj. WW	Adj. YW	Adj. IMF	Adj. REA	SC					
78 (ET)	560 (ET)	1096 (ET)	-	-	-					

Ranks in the top 15% for Marb and \$B, and top 20% for WW.

19

DF PREDESTINED 9403

Birth Date: 02/24/2009 AAA: 16432467 Tattoo: 9403

B/R New Design 036

G A R Predestined

G A R Ext 4206

Twin Valley Precision E161

WCC Forever Trendy S53

V A R Forever Trendy 3077

V D A R New Trend 315
B/R Blackcap Empress 76
N Bar Emulation EXT
G A R 6807 Traveler 1432

G A R Precision 1680
W C C Blackcap C9
Bon View New Design 1407
T R A Forever Trendy 553

CED	BW	WW	YW	Milk	Marb	REA	\$W	\$F	\$G	\$B
5	4.0	45	85	22	.73	.41	20.80	26.13	35.22	59.82
Act. BW	Adj. WW	Adj. YW	Adj. IMF	Adj. REA	SC					
84 (103)	782 (99)	1169 (93)	-	-	-					



LOT 20

20

D F LUTTON 9400

Birth Date: 02/18/2009 AAA: 16436597 Tattoo: 9400

Northern Improvement 4480 GF

Exar Lutton 1831

Exar Saras Dream 9809

Twin Valley Precision E161

Twin Valley Blacklass 5230

W C C Blacklass F5

TC Stockman 365
Blackcap of R R 5367
A&b Yukon 7150
Saras Dream
G A R Precision 1680
W C C Blackcap C9
Woodhill Centurion
G A R Rito 260

CED	BW	WW	YW	Milk	Marb	REA	\$W	\$F	\$G	\$B
8	2.2	51	96	23	.32	.06	25.71	34.80	20.29	48.20
Act. BW	Adj. WW	Adj. YW	Adj. IMF	Adj. REA	SC					
83 (100)	842 (100)	1357 (100)	-	-	-					

9400 is one of the biggest footed, heaviest boned bulls in the sale. Added depth of body and stout hip make this Lutton son a visually impressive young sire. Additionally, he offers the genetic balance and pedigree performance to transmit multi trait improvements to any herd. Ranks in the top 15% for YW and \$F.

21

DF LUTTON 9405

Birth Date: 02/26/2009 AAA: 16456919 Tattoo: 9405

Northern Improvement 4480 GF

Exar Lutton 1831

Exar Saras Dream 9809

Twin Valley Precision E161

EXAR Andi 2775

EXAR Andi 9763

TC Stockman 365
Blackcap of R R 5367
A&b Yukon 7150
Saras Dream
G A R Precision 1680
W C C Blackcap C9
WK Appeal
D F Patsy Ann 8249

CED	BW	WW	YW	Milk	Marb	REA	\$W	\$F	\$G	\$B
5	4.0	59	103	26	.20	.12	25.38	38.81	17.11	48.14
Act. BW	Adj. WW	Adj. YW	Adj. IMF	Adj. REA	SC					
76 (107)	856 (117)	1307 (108)	-	-	-					

Ranks in the top 4% for WW, top 10% for YW and \$F, and top 15% for Milk.



EXAR Lutton 1831

R & L ANGUS ANNUAL BULL SALE

22

W C C LUTE W42

Birth Date: 01/25/2009 AAA: 16354623 Tattoo: W42

Northern Improvement 4480 GF

Exar Lutton 1831

Exar Saras Dream 9809

G D A R Traveler 044

Twin Valley Blackcap 108

W C C Blackcap C9

TC Stockman 365

Blackcap of R R 5367

A&b Yukon 7150

Saras Dream

D H D Traveler 6807

G D A R Blackcap Lady 840

G D A R Blackcap Lady 840

Premier Blackcap 6276A

CED	BW	WW	YW	Milk	Marb	REA	\$W	\$F	\$G	\$B
5	3.4	56	98	26	.30	-.04	27.23	34.87	22.02	46.65
Act. BW	Adj. WW	Adj. YW	Adj. IMF	Adj. REA	SC					
88 (100)	908 (100)	1319 (100)	-	-	-					

Ranks in the top 10% for WW, and top 15% for YW, Milk and \$F.

23

DF TOTAL 9402

Birth Date: 02/21/2009 AAA: 16438941 Tattoo: 9402

Bon View New Design 208

TC Total 410

TC Erica Eileen 2047

S A V 8180 Traveler 004

Boyd Forever Lady 6029

Boyd Forever Lady 4004

B/R New Design 036

Bon View Erica 443

Twin Valley Precision E161

TC Erica Eileen 5116

Sitz Traveler 8180

Boyd Forever Lady 8003

BR Midland

Boyd Forever Lady 811

CED	BW	WW	YW	Milk	Marb	REA	\$W	\$F	\$G	\$B
4	3.5	63	113	27	.54	.33	26.52	47.72	26.30	57.78
Act. BW	Adj. WW	Adj. YW	Adj. IMF	Adj. REA	SC					
74 (104)	771 (105)	1296 (107)	-	-	-					

Ranks in the top 1% for YW and \$F, top 2% for WW, and top 10% for Milk and \$B.

24

DF TOTAL 9404

Birth Date: 02/25/2009 AAA: 16438942 Tattoo: 9404

Bon View New Design 208

TC Total 410

TC Erica Eileen 2047

S A V 8180 Traveler 004

Boyd Forever Lady 6029

Boyd Forever Lady 4004

B/R New Design 036

Bon View Erica 443

Twin Valley Precision E161

TC Erica Eileen 5116

Sitz Traveler 8180

Boyd Forever Lady 8003

BR Midland

Boyd Forever Lady 811

CED	BW	WW	YW	Milk	Marb	REA	\$W	\$F	\$G	\$B
4	2.0	65	115	27	.54	.33	30.39	49.04	26.30	58.21
Act. BW	Adj. WW	Adj. YW	Adj. IMF	Adj. REA	SC					
65 (90)	787 (107)	-	-	-	-					

Ranks in the top 1% for WW, YW and \$F, top 10% for Milk, \$W and \$B, top 15% for Marb, and top 20% for RE.



LOT 23

25

DF TOTAL 9406

Birth Date: 03/01/2009 AAA: 16438943 Tattoo: 9406

Bon View New Design 208

TC Total 410

TC Erica Eileen 2047

S A V 8180 Traveler 004

Boyd Forever Lady 6029

Boyd Forever Lady 4004

B/R New Design 036

Bon View Erica 443

Twin Valley Precision E161

TC Erica Eileen 5116

Sitz Traveler 8180

Boyd Forever Lady 8003

BR Midland

Boyd Forever Lady 811

CED	BW	WW	YW	Milk	Marb	REA	\$W	\$F	\$G	\$B
4	1.4	71	122	27	.54	.33	33.26	54.13	26.30	59.49
Act. BW	Adj. WW	Adj. YW	Adj. IMF	Adj. REA	SC					
62 (87)	871 (119)	1436 (118)	-	-	-					

Ranks in the top 1% for WW, YW and \$F, top 2% for \$W, top 10% for Milk and \$B, and top 20% for Marb.

26

W C C COMPLETE W31

Birth Date: 01/25/2009 AAA: 16350774 Tattoo: W31

Bon View New Design 208

TC Total 410

TC Erica Eileen 2047

Krugerrand of Donamere 490

W C C Primrose I500

N Bar Primrose 2424

B/R New Design 036

Bon View Erica 443

Twin Valley Precision E161

TC Erica Eileen 5116

C H Stacker 7040

Donamere Bachel Beauty 288

Emulation 31

Primrose N Bar 9962

CED	BW	WW	YW	Milk	Marb	REA	\$W	\$F	\$G	\$B
4	3.2	57	102	27	.40	.46	26.49	38.58	29.36	59.20
Act. BW	Adj. WW	Adj. YW	Adj. IMF	Adj. REA	SC					
-	-	-	-	-	-					

Ranks in the top 10% for WW, YW, Milk, RE, \$F and \$B. Dam is a maternal sister to the breed legend "EXT".

27

W C C ADVANCER W25

Birth Date: 01/10/2009 AAA: 16374743 Tattoo: W25

Connealy Onward

Connealy Forward

Becky Lee of Conanga 74

Twin Valley Precision E161

W C C Primrose J237

N Bar Primrose 2424

Connealy Lead On

Altune of Conanga 6104

G A R Grid Maker

Beckon Lee of Conanga 73

G A R Precision 1680

W C C Blackcap C9

Emulation 31

Primrose N Bar 9962

CED	BW	WW	YW	Milk	Marb	REA	\$W	\$F	\$G	\$B
8	1.6	46	89	25	.25	.34	25.43	29.70	22.64	44.41
Act. BW	Adj. WW	Adj. YW	Adj. IMF	Adj. REA	SC					
84 (100)	691 (100)	1249 (100)	-	-	-					

Dam is a full sister to the popular sire W C C Precision E161 J239.



LOT 27

R & L ANGUS ANNUAL BULL SALE



Rito 112 of 2536 Rito 616

28

R&L AB 112 9109

Birth Date: 01/16/2009

AAA: 16549350

Tattoo: 9109

Rito 616 of 4B20 6807

D H D Traveler 6807

Rito 112 of 2536 Rito 616

Rita 4B20 of 0FB1 Bando

G A R Precision 2536

G A R Precision 1680

B/R New Frontier 095

G A R Ext 2104

R&L Pride 410

R & L Pride 151

B/R New Design 036

White Fence Pride H1

V D A R Lucys Boy

Finks Pride 5207 292 692

CED	BW	WW	YW	Milk	Marb	REA	\$W	\$F	\$G	\$B
3	3.4	49	92	21	.57	-.19	22.56	31.54	29.22	48.26

Act. BW	Adj. WW	Adj. YW	Adj. IMF	Adj. REA	SC
78 (100)	829 (100)	1266 (100)	-	-	-

Ranks in the top 15% for Marb and top 20% for \$G. Dam posts progeny ratios of YR 2@102, and %IMF 3@103.

29

R&L AB 112 9110

Birth Date: 01/17/2009

AAA: 16549349

Tattoo: 9110

Rito 616 of 4B20 6807

D H D Traveler 6807

Rito 112 of 2536 Rito 616

Rita 4B20 of 0FB1 Bando

G A R Precision 2536

G A R Precision 1680

B/R New Frontier 095

G A R Ext 2104

R&L Pride 410

R & L Pride 151

B/R New Design 036

White Fence Pride H1

V D A R Lucys Boy

Finks Pride 5207 292 692

CED	BW	WW	YW	Milk	Marb	REA	\$W	\$F	\$G	\$B
3	3.4	49	92	21	.57	-.19	22.56	31.54	29.22	48.26

Act. BW	Adj. WW	Adj. YW	Adj. IMF	Adj. REA	SC
83 (ET)	660 (ET)	1290 (ET)	-	-	-

Ranks in the top 15% for Marb and top 20% for \$G.

30

R&L AB 112 9101

Birth Date: 01/10/2009

AAA: 16549351

Tattoo: 9101

Rito 616 of 4B20 6807

D H D Traveler 6807

Rito 112 of 2536 Rito 616

Rita 4B20 of 0FB1 Bando

G A R Precision 2536

G A R Precision 1680

Car Tracker 904

G A R Ext 2104

R&L Emblem Erica 401

R & L Emblem Erica 215

C A R Tracker 614

Lady New Trend 027 C A R

Finks 75 of 4220 6148

R & L Emblem Erica 5359

CED	BW	WW	YW	Milk	Marb	REA	\$W	\$F	\$G	\$B
4	2.5	60	103	24	.46	-.05	29.31	38.41	21.42	46.25

Act. BW	Adj. WW	Adj. YW	Adj. IMF	Adj. REA	SC
80 (ET)	536 (ET)	1152 (ET)	-	-	-

Ranks in the top 3% for WW, top 10% for YW and \$F, and top 15% for \$W.



31

R&L AB 112 9128

Birth Date: 02/11/2009

AAA: 16549346

Tattoo: 9128

Rito 616 of 4B20 6807

D H D Traveler 6807

Rito 112 of 2536 Rito 616

Rita 4B20 of 0FB1 Bando

G A R Precision 2536

G A R Precision 1680

B/R New Frontier 095

G A R Ext 2104

R&L Protet 322

R & L Protet 963

B/R New Design 036

White Fence Pride H1

Leachman Jefe

H A Max 417

CED	BW	WW	YW	Milk	Marb	REA	\$W	\$F	\$G	\$B
4	2.9	59	102	23	.53	.03	27.90	37.78	28.65	55.28

Act. BW	Adj. WW	Adj. YW	Adj. IMF	Adj. REA	SC
78 (ET)	609 (ET)	1147 (ET)	-	-	-

Ranks in the top 4% for WW, top 10% for YW and \$F, top 15% for \$B, and top 20% for Marb. Dam posts progeny ratios of WR 4@114, YR 4@101, %IMF 9@102, and RE 9@104.

32

R&L AB 112 9131

Birth Date: 02/11/2009

AAA: 16549346

Tattoo: 9128

Rito 616 of 4B20 6807

D H D Traveler 6807

Rito 112 of 2536 Rito 616

Rita 4B20 of 0FB1 Bando

G A R Precision 2536

G A R Precision 1680

B/R New Frontier 095

G A R Ext 2104

R&L Protet 322

R & L Protet 963

B/R New Design 036

White Fence Pride H1

Leachman Jefe

H A Max 417

CED	BW	WW	YW	Milk	Marb	REA	\$W	\$F	\$G	\$B
4	2.9	59	102	23	.53	.03	27.90	37.78	28.65	55.28

Act. BW	Adj. WW	Adj. YW	Adj. IMF	Adj. REA	SC
83 (ET)	643 (ET)	1113 (ET)	-	-	-

Ranks in the top 4% for WW, top 10% for YW and \$F, top 15% for \$B, and top 20% for Marb.

R & L ANGUS ANNUAL BULL SALE



33

R&L CH FINAL ANSWER 9002

Birth Date: 01/19/2009 AAA: 16541431 Tattoo: 9002

Sitz Traveler 8180

G D A R Traveler 71

S A V Final Answer 0035

Sitz Everelda Entense 1137

S A V Emulous 8145

Bon View Bando 598

D C C Rito Platinum 3J4

S A V Sky Emulous 2124

R&L Ashley Lou 701

Rito 112 of 2536 Rito 616

R&L Ashley Lou 420

D C C Ideal 180 of 692 8375

B/R New Frontier 095

R&L Ashley Lou 007

CED	BW	WW	YW	Milk	Marb	REA	\$W	\$F	\$G	\$B
9	.4	53	96	21	.34	.10	29.21	34.02	21.92	43.97

Act. BW	Adj. WW	Adj. YW	Adj. IMF	Adj. REA	SC
74 (98)	650 (99)	1234 (103)	-	-	-

Ranks in the top 15% for CED, BW YW and \$W, and top 20% for \$F.

S A V Final Answer 0035



34

R&L FINAL ANSWER 9105

Birth Date: 01/14/2009 AAA: 16547973 Tattoo: 9105

Sitz Traveler 8180

G D A R Traveler 71

S A V Final Answer 0035

Sitz Everelda Entense 1137

S A V Emulous 8145

Bon View Bando 598

Leachman Right Time

S A V Sky Emulous 2124

7 B H Varteny 919

7 B H Varteny 750

N Bar Emulation EXT

Leachman Erica 0025

Leachman Jefe

Rev Rose of C H 7084

CED	BW	WW	YW	Milk	Marb	REA	\$W	\$F	\$G	\$B
5	2.2	56	94	19	.14	.19	32.48	30.83	12.17	35.14

Act. BW	Adj. WW	Adj. YW	Adj. IMF	Adj. REA	SC
83 (ET)	719 (ET)	1279 (ET)	-	-	-

Ranks in the top 3% for \$W, top 10% for WW, and top 20% for YW.

35

R&L FINAL ANSWER 9102

Birth Date: 01/11/2009 AAA: 16547971 Tattoo: 9102

Sitz Traveler 8180

S A V Final Answer 0035

S A V Emulous 8145

Leachman Right Time

7 B H Varteny 919

7 B H Varteny 750

G D A R Traveler 71

Sitz Everelda Entense 1137

Bon View Bando 598

S A V Sky Emulous 2124

N Bar Emulation EXT

Leachman Erica 0025

Leachman Jefe

Rev Rose of C H 7084

CED	BW	WW	YW	Milk	Marb	REA	\$W	\$F	\$G	\$B
5	2.2	56	94	19	.14	.19	32.48	30.83	12.17	35.14

Act. BW	Adj. WW	Adj. YW	Adj. IMF	Adj. REA	SC
78 (ET)	596 (ET)	1241 (ET)	-	-	-

Ranks in the top 3% for \$W, top 10% for WW, and top 20% for YW.

36

R&L FINAL ANSWER 9104

Birth Date: 01/14/2009 AAA: 16547972 Tattoo: 9104

Sitz Traveler 8180

G D A R Traveler 71

S A V Final Answer 0035

Sitz Everelda Entense 1137

S A V Emulous 8145

Bon View Bando 598

Leachman Right Time

S A V Sky Emulous 2124

7 B H Varteny 919

7 B H Varteny 750

N Bar Emulation EXT

Leachman Erica 0025

Leachman Jefe

Rev Rose of C H 7084

CED	BW	WW	YW	Milk	Marb	REA	\$W	\$F	\$G	\$B
5	2.2	56	94	19	.14	.19	32.48	30.83	12.17	35.14

Act. BW	Adj. WW	Adj. YW	Adj. IMF	Adj. REA	SC
78 (ET)	652 (ET)	1188 (ET)	-	-	-

Ranks in the top 3% for \$W, top 10% for WW, and top 20% for YW.



37

DF MANDAN 9203

Birth Date: 01/05/2009 AAA: 16438923 Tattoo: 9203

S A V 8180 Traveler 004

Sitz Traveler 8180

S A V Mandan 5664

Boyd Forever Lady 8003

S A V Abigale 0451

Schoenes Fix It 826

Vermilion Dateline 7078

S A V Abigale 6062

W C C Forever Lady M23

Connealy Dateline

Vermilion Blackbird 5044

V A R Forever Lady 4304

G D A R Executive 727

Blackcap Lady 384 G D A R

CED	BW	WW	YW	Milk	Marb	REA	\$W	\$F	\$G	\$B
2	1.6	52	100	26	.09	.64	26.84	38.51	11.38	41.97

Act. BW	Adj. WW	Adj. YW	Adj. IMF	Adj. REA	SC
65 (87)	767 (104)	1207 (101)	-	-	-

Ranks in the top 1% for RE, top 10% for \$F, top 15% for Milk and top 20% for WW.

R & L ANGUS ANNUAL BULL SALE

38

DF MANDAN 9209

Birth Date: 01/15/2009 AAA: 16438927 Tattoo: 9209
 S A V 8180 Traveler 004 Sitz Traveler 8180
 S A V Mandan 5664 Boyd Forever Lady 8003
 S A V Abigale 0451 Schoenes Fix It 826
 Vermilion Dateline 7078 S A V Abigale 6062
 W C C Forever Lady M23 Connealy Dateline
 V A R Forever Lady 4304 Vermilion Blackbird 5044
 G D A R Executive 727
 Blackcap Lady 384 G D A R

CED	BW	WW	YW	Milk	Marb	REA	\$W	\$F	\$G	\$B
2	4.7	50	98	26	.09	.64	19.41	37.25	11.38	41.60
Act. BW	Adj. WW	Adj. YW	Adj. IMF	Adj. REA	SC					
87 (117)	739 (101)	1176 (99)	-	-	-					

Ranks in the top 1% for RE, top 10% for \$F, and top 15% for YW

S A V Net Worth 4200



39

R&L NET WORTH 9009

Birth Date: 01/24/2009 AAA: 16548240 Tattoo: 9009
 S A V 8180 Traveler 004 Sitz Traveler 8180
 S A V Net Worth 4200 Boyd Forever Lady 8003
 S A V May 2410 S A F 598 Bando 5175
 S A V May 2410 S A V May 6269
 Southern A P Precision 2146 Twin Valley Precision E161
 R & L Blackcap 524 G A R Scotch Cap 867
 W A Blackcap C9 811 Leachman Explorer
 W C C Blackcap C9

CED	BW	WW	YW	Milk	Marb	REA	\$W	\$F	\$G	\$B
3	3.6	54	99	24	.28	.35	24.09	36.68	17.34	47.40
Act. BW	Adj. WW	Adj. YW	Adj. IMF	Adj. REA	SC					
80 (98)	657 (100)	1172 (98)	-	-	-					

Ranks in the top 10% for YW and \$F, top 15% for WW, and top 20% for RE.

40

DF NET WORTH 9229

Birth Date: 03/14/2009 AAA: 16438937 Tattoo: 9229
 S A V 8180 Traveler 004 Sitz Traveler 8180
 S A V Net Worth 4200 Boyd Forever Lady 8003
 S A V May 2410 S A F 598 Bando 5175
 S A V May 2410 S A V May 6269
 Twin Valley Precision E161 G A R Precision 1680
 EXAR Andi 2775 W C C Blackcap C9
 EXAR Andi 9763 WK Appeal
 D F Patsy Ann 8249

CED	BW	WW	YW	Milk	Marb	REA	\$W	\$F	\$G	\$B
3	6.4	46	90	25	.18	.32	14.73	30.70	13.81	41.39
Act. BW	Adj. WW	Adj. YW	Adj. IMF	Adj. REA	SC					
85 (120)	689 (94)	-	-	-	-					

Ranks in the top 20% for Milk.

41

DF TRAVELER 8196

Birth Date: 12/17/2008 AAA: 16416649 Tattoo: 8196
 S A V 8180 Traveler 004 Sitz Traveler 8180
 D F Traveler 004 S520 Boyd Forever Lady 8003
 W C C Primrose L357 G A R Precision 1680
 O S U 9FB3 Halfback 6164 W C C Primrose I503
 W C C Primrose I503 Rito 9FB3 of 5H11 Fullback
 N Bar Primrose 2424 D F Empress 6079
 Emulation 31
 Primrose N Bar 9962

CED	BW	WW	YW	Milk	Marb	REA	\$W	\$F	\$G	\$B
2	4.3	48	92	21	.15	.13	19.87	31.93	13.18	41.09
Act. BW	Adj. WW	Adj. YW	Adj. IMF	Adj. REA	SC					
63 (88)	747 (96)	1177 (100)	-	-	-					

42

R&L EMBLAZON 9126

Birth Date: 2/10/2009 AAA: Tattoo:
 D H D Traveler 6807 Q A S Traveler 23-4
 O C C Emblazon 854E Bemindful Maid D H D 0807
 Dixie Erica of C H 1019 PBC 707 1M F0203
 Twin Valley Precision E161 Dixie Erica of C H 615
 Thomas Ester 3158 G A R Precision 1680
 Thomas Ester 9591 W C C Blackcap C9
 Sitz Traveler 8180
 Thomas Ester 4123

CED	BW	WW	YW	Milk	Marb	REA	\$W	\$F	\$G	\$B
7	2.0	43	85	35	-.02	.47	24.40	-	-	-
Act. BW	Adj. WW	Adj. YW	Adj. IMF	Adj. REA	SC					
83	679	1266	-	-	-					

43

R & L MARATHON 9027

Birth Date: 02/12/2009 AAA: 16390267 Tattoo: 9027
 B C Marathon 7022 O C C Kirby 633K
 B C Marathon Black Bird 306-6 Gibbet Hill Mignonne E37
 B C Blkbird Girl 207 854E 306 O C C Emblazon 854E
 W C C Precision E161 J239 CAF Blackbird Girl P 97
 R & L Protet 619 Twin Valley Precision E161
 R&L Protet 322 N Bar Primrose 2424
 B/R New Frontier 095
 R&L Protet 963

CED	BW	WW	YW	Milk	Marb	REA	\$W	\$F	\$G	\$B
3	2.9	55	95	14	.32	.33	24.83	32.22	24.39	48.33
Act. BW	Adj. WW	Adj. YW	Adj. IMF	Adj. REA	SC					
80 (98)	725 (101)	1231 (103)	-	-	-					

Ranks in the top 10% for WW, and top 20% for YW and RE.



LOT 42

R & L ANGUS ANNUAL BULL SALE

44

R & L MARATHON 9036

Birth Date: 02/23/2009 AAA: 16541458 Tattoo: 9036
 B C Marathon 7022
BC Marathon Black Bird 306-6
 BC Blkbird Girl 207 854E 306
 B/R New Frontier 095
R & L Silveridge 667
 Silver Ridge Elba 996

O C C Kirby 633K
 Gibbet Hill Mignonne E37
 O C C Emblazon 854E
 CAF Blackbird Girl P 97
 B/R New Design 036
 White Fence Pride H1
 N Bar Emulation EXT
 Silver Ridge Elba 5716

CED	BW	WW	YW	Milk	Marb	REA	\$W	\$F	\$G	\$B
3	3.4	55	95	19	.35	.20	25.31	32.22	24.90	45.78
Act. BW	Adj. WW	Adj. YW	Adj. IMF	Adj. REA	SC					
83 (103)	719 (109)	1314 (110)	-	-	-					

Ranks in the top 10% for WW.

B C Marathon 7022



47

R&L MARATHON 9130

Birth Date: 02/12/2009 AAA: 16549404 Tattoo: 9130
 O C C Kirby 633K
B C Marathon 7022
 Gibbet Hill Mignonne E37
 C A Future Direction 5321
LLA Georgina 410
 L L A Georgina 06

O C C Emblazon 854E
 O C C Blackbird 785H
 Papa Equator 2928
 Gibbet Hill Mignonne TR 29
 G A R Precision 1680
 C A Miss Power Fix 308
 Sitz Traveler 9929
 Lyons Georgina 2165

CED	BW	WW	YW	Milk	Marb	REA	\$W	\$F	\$G	\$B
2	4.5	47	79	20	.27	.40	22.45	19.60	23.15	44.46
Act. BW	Adj. WW	Adj. YW	Adj. IMF	Adj. REA	SC					
83 (ET)	577 (ET)	1118 (ET)	-	-	-					

Ranks in the top 15% for RE.

49

R&L RIGHT TIME 9025

Birth Date: 02/10/2009 AAA: 16541436 Tattoo: 9025
 Hyline Right Time 338
R & L Right Time 512
 Masterfare Entense 3035
 B/R New Frontier 095
R&L Ashley Lou 420
 R&L Ashley Lou 007

Leachman Right Time
 Hyline Pride 265
 B/R New Design 323
 Baar Everelda Entense 9225
 B/R New Design 036
 White Fence Pride H1
 V D A R Lucys Boy
 Heartland Ashley 669

CED	BW	WW	YW	Milk	Marb	REA	\$W	\$F	\$G	\$B
7	1.5	49	88	21	.39	.07	27.76	27.56	26.06	45.92
Act. BW	Adj. WW	Adj. YW	Adj. IMF	Adj. REA	SC					
78 (95)	647 (98)	1207 (101)	-	-	-					

45

R & L MARATHON MAN 9046

Birth Date: 03/16/2009 AAA: 16390264 Tattoo: 9046
 B C Marathon 7022
BC Marathon Black Bird 306-6
 BC Blkbird Girl 207 854E 306
 S A F 598 Bando 5175
R & L Maternal Lady 588
 R&L Maternal Lady 950

O C C Kirby 633K
 Gibbet Hill Mignonne E37
 O C C Emblazon 854E
 CAF Blackbird Girl P 97
 Bon View Bando 598
 S A F Royal Lass 1002
 N Bar Emulation EXT
 T R A Maternal Lady 731

CED	BW	WW	YW	Milk	Marb	REA	\$W	\$F	\$G	\$B
-1	5.1	59	97	22	.30	.18	24.37	32.67	20.77	43.96
Act. BW	Adj. WW	Adj. YW	Adj. IMF	Adj. REA	SC					
96 (115)	780 (108)	1207 (101)	-	-	-					

Ranks in the top 4% for WW, top 10% for YW and top 15% for \$F.

46

R&L MARATHON 9503

Birth Date: 02/01/2009 AAA: 16549400 Tattoo: 9503
 O C C Kirby 633K
B C Marathon 7022
 Gibbet Hill Mignonne E37
 Leachman Right Time
7 B H Varteny 919
 7 B H Varteny 750

O C C Emblazon 854E
 O C C Blackbird 785H
 Papa Equator 2928
 Gibbet Hill Mignonne TR 29
 N Bar Emulation EXT
 Leachman Erica 0025
 Leachman Jefe
 Rev Rose of C H 7084

CED	BW	WW	YW	Milk	Marb	REA	\$W	\$F	\$G	\$B
-1	5.6	54	88	17	.11	.20	22.26	25.66	13.20	36.29
Act. BW	Adj. WW	Adj. YW	Adj. IMF	Adj. REA	SC					
83 (ET)	593 (ET)	1177 (ET)	-	-	-					

Ranks in the top 15% for WW.

48

R&L EH RIGHT TIME 9034

Birth Date: 02/23/2009 AAA: 16541434 Tattoo: 9034
 Hyline Right Time 338
R & L Right Time 512
 Masterfare Entense 3035
 R A Genetic Trend
R&L Desiree 403
 N F Desiree 9M

Leachman Right Time
 Hyline Pride 265
 B/R New Design 323
 Baar Everelda Entense 9225
 P S High Pockets
 Hyline Pride Lucy 9043
 Mc Bee WMR Super X 745
 RCC Desert Mc Clintock 4643

CED	BW	WW	YW	Milk	Marb	REA	\$W	\$F	\$G	\$B
4	3.1	64	97	20	.09	.09	31.74	30.73	13.21	33.67
Act. BW	Adj. WW	Adj. YW	Adj. IMF	Adj. REA	SC					
85 (104)	786 (119)	1300 (108)	-	-	-					

Ranks in the top 1% for the breed for both WW and \$W.



R & L ANGUS ANNUAL BULL SALE

50

R&L EH THUNDER 9010

Birth Date: 01/26/2009 AAA: 16548225 Tattoo: 9010

Baldrige Kaboom K243 KCF

Connealy Thunder

Baldrige Kaboom K243 KCF

W C C Precision E161 J239

R&L Desiree 702

R&L Desiree 403

Jauer 353 Traveler 589 27

Pleasanta of Conanga 736

Bon View Bando 598

Partina of Conanga 6237

Twin Valley Precision E161

N Bar Primrose 2424

R A Genetic Trend

N F Desiree 9M

CED	BW	WW	YW	Milk	Marb	REA	\$W	\$F	\$G	\$B
5	2.0	46	88	14	.20	.21	22.55	28.71	20.19	41.96
Act. BW	Adj. WW	Adj. YW	Adj. IMF	Adj. REA	SC					
78 (103)	650 (99)	1200 (100)	-	-	-					

51

R&L BEXTOR 9016

Birth Date: 01/30/2009 AAA: 16549254 Tattoo: 9016

B A R Ext Traveler 205

C R A Bextor 872 5205 608

Cra Lady Jaye 608 498 S Easy

K C F Bennett Total

R&L Everelda Entense 711

R & L Everelda Entense 513

N Bar Emulation EXT

B A R Queen Traveler 3015

G A R Sleep Easy 1009

H H F 917 Lady 975 498

Sitz Alliance 6595

Ext of Conanga 6790

Hyline Right Time 338

Masterfare Entense 3035

CED	BW	WW	YW	Milk	Marb	REA	\$W	\$F	\$G	\$B
8	.5	50	93	28	.39	.36	29.22	32.16	26.10	46.96
Act. BW	Adj. WW	Adj. YW	Adj. IMF	Adj. REA	SC					
65 (87)	668 (101)	1238 (103)	-	-	-					

Ranks in the top 10% for Milk, top 15% for \$W, and top 20% for CED and BW.

52

R&L AB BEXTOR 9124

Birth Date: 02/01/2009 AAA: 16549253 Tattoo: 9124

B A R Ext Traveler 205

C R A Bextor 872 5205 608

Cra Lady Jaye 608 498 S Easy

Schurrtop MC 2500

R&L Everelda Entense 710

Masterfare Entense 3035

N Bar Emulation EXT

B A R Queen Traveler 3015

G A R Sleep Easy 1009

H H F 917 Lady 975 498

Schurrtop M C

Schurrtop R S 1413 2153

B/R New Design 323

Baar Everelda Entense 9225

CED	BW	WW	YW	Milk	Marb	REA	\$W	\$F	\$G	\$B
-	4.2	52	91	29	-	-	24.61	29.38	-	-
Act. BW	Adj. WW	Adj. YW	Adj. IMF	Adj. REA	SC					
83 (112)	668 (108)	1132 (101)	-	-	-					

Ranks in the top 4% for Milk, and top 20% for WW.



53

DF ON TARGET 9217

Birth Date: 02/18/2009 AAA: 16451734 Tattoo: 9217

S A F 598 Bando 5175

Boyd On Target 1083

Boyd Forever Lady 7095

Vermilion Dateline 7078

DF Rita S467

WCC Rita J111

Bon View Bando 598

S A F Royal Lass 1002

D H D Traveler 6807

S V F Forever Lady 57D

Connealy Dateline

Vermilion Blackbird 5044

Twin Valley Stockman 5137

KMK Rita H55 of Lucys Boy

CED	BW	WW	YW	Milk	Marb	REA	\$W	\$F	\$G	\$B
1	4.8	56	105	22	.18	.03	20.49	42.11	13.65	37.80
Act. BW	Adj. WW	Adj. YW	Adj. IMF	Adj. REA	SC					
80 (107)	782 (110)	1296 (112)	-	-	-					

Ranks in the top 4% for YW and \$F, and top 10% for WW.



C R A Bextor 872 5205 608

54

DF ON TARGET 9221

Birth Date: 01/22/2009 AAA: 16438929 Tattoo: 9221

S A F 598 Bando 5175

Boyd On Target 1083

Boyd Forever Lady 7095

Bon View New Design 1407

EXAR Lassie 2310

EXAR Lassie 0324

Bon View Bando 598

S A F Royal Lass 1002

D H D Traveler 6807

S V F Forever Lady 57D

B/R New Design 036

Bon View Pride 664

Connealy Dateline

Leachman Lassie 7223

CED	BW	WW	YW	Milk	Marb	REA	\$W	\$F	\$G	\$B
6	3.0	54	106	22	.42	-.08	22.76	43.98	21.74	41.51
Act. BW	Adj. WW	Adj. YW	Adj. IMF	Adj. REA	SC					
80 (108)	798 (109)	1348 (114)	-	-	-					

Ranks in the top 4% for YW and 15% for WW.

55

W C C PRESTIGE W61

Birth Date: 02/05/2009 AAA: 16347673 Tattoo: W61

H S A F Bando 1961

C J Prestige 25T

C J Blackbird 11P

W C C Extra Stout N7

WCC Phantasia S54

W C C Phantasia 312

S A F 598 Bando 5175

J K S Miss Cheyenne 196

TC Freedom 104

H F Blackbird 61H

TC Extra 9140

Twin Valley Blackcap 2819

W C C Special Design L309

WCC Phantasia B18

CED	BW	WW	YW	Milk	Marb	REA	\$W	\$F	\$G	\$B
4	2.8	47	90	20	-	-	22.80	30.32	-	-
Act. BW	Adj. WW	Adj. YW	Adj. IMF	Adj. REA	SC					
81 (100)	823 (105)	1316 (106)	-	-	-					

R & L ANGUS ANNUAL BULL SALE

BT Crossover 758N



56 DF CROSSOVER 9216

Birth Date: 02/15/2009 AAA: 16444177 Tattoo: 9216

C A Future Direction 5321

G A R Precision 1680

BT Crossover 758N

C A Miss Power Fix 308

BT Royal Pride 237G

O S U 6T6 Ultra

S A V 8180 Traveler 004

BT Royal Pride 326A

SBP Rita 6019

Sitz Traveler 8180

Bricton Rita 2145

Boyd Forever Lady 8003

Bon View New Design 1407

G A R Ext 1044

CED	BW	WW	YW	Milk	Marb	REA	\$W	\$F	\$G	\$B
8	1.3	60	103	28	.56	.38	32.23	38.41	28.66	55.97
Act. BW	Adj. WW	Adj. YW	Adj. IMF	Adj. REA	SC					
70 (94)	819 (115)	1198 (103)	-	-	-					

Ranks in the top 4% for \$W, top 10% for YW, \$F and \$B, and top 15% for Marb and RE.

57 DF CROSSOVER 9224

Birth Date: 03/08/2009 AAA: 16438934 Tattoo: 9224

C A Future Direction 5321

G A R Precision 1680

BT Crossover 758N

C A Miss Power Fix 308

BT Royal Pride 237G

O S U 6T6 Ultra

Vermilion Dateline 7078

BT Royal Pride 326A

W C C Forever Lady M23

Connealy Dateline

V A R Forever Lady 4304

Vermilion Blackbird 5044

G D A R Executive 727

Blackcap Lady 384 G D A R

CED	BW	WW	YW	Milk	Marb	REA	\$W	\$F	\$G	\$B
6	1.0	44	88	25	.27	.64	26.34	29.48	24.59	51.39
Act. BW	Adj. WW	Adj. YW	Adj. IMF	Adj. REA	SC					
60 (83)	650 (89)	1092 (90)	-	-	-					

Ranks in the top 1% for RE, and top 20% for Milk and \$B.

58 DF EXTRA STOUT 9204

Birth Date: 01/05/2009 AAA: 16448428 Tattoo: 9204

TC Extra 9140

TC Stockman 365

W C C Extra Stout N7

TC Lass 3008

Twin Valley Blackcap 2819

Whitestone Widespread MB

Vermilion Dateline 7078

W C C Blackcap C9

W C C Forever Lady M23

V A R Forever Lady 4304

Connealy Dateline

Vermilion Blackbird 5044

G D A R Executive 727

Blackcap Lady 384 G D A R

CED	BW	WW	YW	Milk	Marb	REA	\$W	\$F	\$G	\$B
5	3.7	39	84	19	.07	.43	15.67	27.44	13.77	35.84
Act. BW	Adj. WW	Adj. YW	Adj. IMF	Adj. REA	SC					
83 (112)	665 (91)	1092 (92)	-	-	-					

Ranks in the top 10% for RE.

59 DF PRESTEGE 9401

Birth Date: 02/20/2009 AAA: 16553813 Tattoo: 9401

H S A F Bando 1961

S A F 598 Bando 5175

C J Prestige 25T

J K S Miss Cheyenne 196

C J Blackbird 11P

TC Freedom 104

Twin Valley Precision E161

H F Blackbird 61H

WCC Primrose S123

W C C Primrose L349

G A R Precision 1680

W C C Blackcap C9

Bon View New Design 878

W C C Primrose I500

CED	BW	WW	YW	Milk	Marb	REA	\$W	\$F	\$G	\$B
9	1.2	41	88	20	-	-	22.14	30.64	-	-
Act. BW	Adj. WW	Adj. YW	Adj. IMF	Adj. REA	SC					
72 (89)	775 (99)	1262 (103)	-	-	-					

60 R&L ECLIPSE 9030

Birth Date: 02/15/2009 AAA: 16541459 Tattoo: 9030

SF Eclipse

O C C Legend 616L

RSKY 4502 Eclipse 6511

Holly Hill MS PGP 5063 2004

RSKY 1233 Ms Homer 4502

O C C Homer 650H

D C C Rito Platinum 3J4

Jauer 922 Broadsid 9144 1233

R & L Blackcap 7501

W A Blackcap C9 811

Rito 112 of 2536 Rito 616

D C C Ideal 180 of 692 8375

Leachman Explorer

W C C Blackcap C9

CED	BW	WW	YW	Milk	Marb	REA	\$W	\$F	\$G	\$B
-	1.6	58	89	18	.36	.13	32.72	25.12	22.63	42.80
Act. BW	Adj. WW	Adj. YW	Adj. IMF	Adj. REA	SC					
76 (101)	754 (114)	1218 (101)	-	-	-					

Ranks in the top 5% for WW.

61 R&L ECLIPSE 9038

Birth Date: 02/24/2009 AAA: 16541451 Tattoo: 9038

SF Eclipse

O C C Legend 616L

RSKY 4502 Eclipse 6511

Holly Hill MS PGP 5063 2004

RSKY 1233 Ms Homer 4502

O C C Homer 650H

Hylina Right Time 338

Jauer 922 Broadsid 9144 1233

R & L Everelda Entense 7518

Masterfare Entense 3035

Leachman Right Time

Hylina Pride 265

B/R New Design 323

Baar Everelda Entense 9225

CED	BW	WW	YW	Milk	Marb	REA	\$W	\$F	\$G	\$B
13	.4	54	86	20	.28	.26	32.75	23.71	22.46	42.94
Act. BW	Adj. WW	Adj. YW	Adj. IMF	Adj. REA	SC					
68 (91)	688 (104)	1139 (95)	-	-	-					

Ranks in the top 15% for BW and WW.



LOT 60

R & L ANGUS ANNUAL BULL SALE

62

R&L AB ECLIPSE 9135

Birth Date: 03/11/2009

AAA: 16541452

Tattoo: 9135

SF Eclipse

RSKY 4502 Eclipse 6511

RSKY 1233 Ms Homer 4502

Kahn Broadband R A 94L

R & L Everelda Entense 7516

ER Everelda Entense K217

O C C Legend 616L

Holly Hill MS PGP 5063 2004

O C C Homer 650H

Jauer 922 Broadside 9144 1233

Bon View Bando 598

Shadybrook Ever Entense 491G

B/R New S A F Focus of E R 323

Sitz Everelda Entense 023

CED	BW	WW	YW	Milk	Marb	REA	\$W	\$F	\$G	\$B
-	1.2	44	79	21	-	-	27.30	20.70	-	-
Act. BW	Adj. WW	Adj. YW	Adj. IMF	Adj. REA	SC					
76 (103)	629 (102)	1136 (102)	-	-	-					

63

R&L AB ECLIPSE 9137

Birth Date: 03/20/2009

AAA: 16541455

Tattoo: 9137

A A R New Trend

Boyd New Day 8005

S V F Forever Lady 57D

Lemmon Newsline C804

R & L Maternal Lady 606

R&L Maternal Lady 950

V D A R Shoshone 548

Donna A A R 74

Leachman Right Time

S V F Forever Lady 1128

B/R New Design 036

White Fence Pride H1

N Bar Emulation EXT

T R A Maternal Lady 731

CED	BW	WW	YW	Milk	Marb	REA	\$W	\$F	\$G	\$B
8	3.1	54	99	21	.14	.38	24.53	36.68	17.45	45.08
Act. BW	Adj. WW	Adj. YW	Adj. IMF	Adj. REA	SC					
76 (98)	694 (112)	1208 (108)	-	-	-					

Ranks in the top 4% for \$W, and top 20% for CED.

64

R&L AB NEW DAY 9133

Birth Date: 02/18/2009

AAA: 16541460

Tattoo: 9133

Boyd New Day 8005

R & L New Day 7527

Masterfare Entense 3035

R&L Silveridge Broadband 427

R & L Blackcap 635

R&L Blackcap 418

A A R New Trend

S V F Forever Lady 57D

B/R New Design 323

Baar Everelda Entense 9225

Kahn Broadband R A 94L

Silver Ridge Elba R&L

B/R New Frontier 095

R & L Blackcap 010

CED	BW	WW	YW	Milk	Marb	REA	\$W	\$F	\$G	\$B
-	1.6	45	85	19	.13	.32	25.13	26.13	17.10	41.71
Act. BW	Adj. WW	Adj. YW	Adj. IMF	Adj. REA	SC					
74 (96)	602 (97)	1093 (98)	-	-	-					

FALL BULLS

65

DF NET WORTH 8174

Birth Date: 09/16/2008

AAA: 16416644

Tattoo: 8174

S A V 8180 Traveler 00

S A V Net Worth 4200

S A V May 2410

Vermilion Dateline 7078

W C C Forever Lady M23

V A R Forever Lady 4304

Sitz Traveler 8180

Boyd Forever Lady 8003

S A F 598 Bando 5175

S A V May 6269

Connealy Dateline

Vermilion Blackbird 5044

G D A R Executive 727

Blackcap Lady 384 G D A R

CED	BW	WW	YW	Milk	Marb	REA	\$W	\$F	\$G	\$B
3	5.4	51	95	25	.08	.50	19.45	33.79	12.30	39.93
Act. BW	Adj. WW	Adj. YW	Adj. IMF	Adj. REA	SC					
85 (121)	748 (103)	1159 (95)	4.4 (86)	13.1 (103)	-					

Dam is a maternal brother to the Grand Champion Female at the 2009 All-American Angus Futurity in Louisville, KY.



R & L ANGUS ANNUAL BULL SALE



66 DF MASTERPIECE 8167

Birth Date: 09/01/2008 AAA: 16418675 Tattoo: 8167
 S A V 8180 Traveler 004
S A V Masterpiece 5289
 S A V Queen 8301
 Twin Valley Precision E161
DF Forevermore E161 R369
 Maple Lane Forevermore 1022

CED	BW	WW	YW	Milk	Marb	REA	\$W	\$F	\$G	\$B
4	3.7	48	89	21	.04	.30	22.31	28.93	8.43	33.77
Act. BW	Adj. WW	Adj. YW	Adj. IMF	Adj. REA	SC					
71 (101)	699 (94)	1141 (98)	3.99 (84)	12.3 (100)	-					

67 DF MASTERPIECE 8162

Birth Date: 09/01/2008 AAA: 16418664 Tattoo: 8162
 S A V 8180 Traveler 004
S A V Masterpiece 5289
 S A V Queen 8301
 O S U 9FB3 Halfback 6164
D F Blackcap M79
 W C C Blackcap F162

CED	BW	WW	YW	Milk	Marb	REA	\$W	\$F	\$G	\$B
4	2.7	54	101	21	.05	.26	24.75	38.74	6.65	37.31
Act. BW	Adj. WW	Adj. YW	Adj. IMF	Adj. REA	SC					
70 (97)	781 (105)	1275 (110)	4.71 (99)	12.7 (103)	-					

Ranks in the top 10% for YW and \$F, and top 15% for WW and Milk.

68 R&L TRAVELER 004 8827

Birth Date: 09/02/2008 AAA: 16547960 Tattoo: 8827
 Sitz Traveler 8180
S A V 8180 Traveler 004
 Boyd Forever Lady 8003
 Leachman Right Time
7 B H Varteny 919
 7 B H Varteny 750

CED	BW	WW	YW	Milk	Marb	REA	\$W	\$F	\$G	\$B
2	4.5	54	94	21	.25	.01	23.78	31.60	4.77	30.49
Act. BW	Adj. WW	Adj. YW	Adj. IMF	Adj. REA	SC					
72 (ET)	618 (ET)	1100 (ET)	5.16 (123)	11.1 (94)	-					

Ranks in the top 15% for WW and top 20% for YW.

69 R&L TRAVELER 004 8820

Birth Date: 09/06/2008 AAA: 16547959 Tattoo: 8820
 Sitz Traveler 8180
S A V 8180 Traveler 004
 Boyd Forever Lady 8003
 Leachman Right Time
7 B H Varteny 919
 7 B H Varteny 750

CED	BW	WW	YW	Milk	Marb	REA	\$W	\$F	\$G	\$B
2	4.5	54	94	21	.20	.11	23.78	31.60	8.05	32.70
Act. BW	Adj. WW	Adj. YW	Adj. IMF	Adj. REA	SC					
72 (ET)	590 (ET)	1010 (ET)	4.76 (113)	12.2 (103)	-					

Ranks in the top 15% for WW, and top 20% for YW.



70 DF TRAVELER 8178

Birth Date: 10/01/2008 AAA: 16416639 Tattoo: 8178
 S A V 8180 Traveler 004
D F Traveler 004 S520
 W C C Primrose L357
 BR Midland
DF Forevermore R402
 Maple Lane Forevermore 1022

CED	BW	WW	YW	Milk	Marb	REA	\$W	\$F	\$G	\$B
1	4.3	53	100	19	.41	.15	20.38	38.11	21.92	48.64
Act. BW	Adj. WW	Adj. YW	Adj. IMF	Adj. REA	SC					
75 (108)	778 (104)	1287 (111)	5.68 (120)	12.8 (104)	-					

Ranks in the top 10% for YW and \$F, and top 15% for WW.

71 DF TRAVELER 8190

Birth Date: 10/24/2008 AAA: 16416639 Tattoo: 8190
 S A V 8180 Traveler 004
D F Traveler 004 S520
 W C C Primrose L357
 Prodigy 5001 of B C A R
W C C Evergreen L428
 W C C Evergreen I538

CED	BW	WW	YW	Milk	Marb	REA	\$W	\$F	\$G	\$B
3	3.4	56	100	23	.13	.18	25.40	36.91	10.46	40.59
Act. BW	Adj. WW	Adj. YW	Adj. IMF	Adj. REA	SC					
75 (104)	832 (112)	1248 (108)	4.36 (92)	13.9 (113)	-					

Ranks in the top 10% for WW and YW, and top 15% for \$F.

72

R&L KABOOM 8822

Birth Date: AAA: Tattoo: 8822

Jauer 353 Traveler 589 27

Jauer 7111 Traveler 353 71

Baldrige Kaboom K243 KCF

Jauer 6807 Traveler 27 085

Pleasant of Conanga 736

G T Maximum

B/R New Design 323

Pleasant Pill of Conanga

Masterfare Entense 3035

B/R New Design 036

Baar Everelda Entense 9225

B/R Ruby of Tiffany 155

Gdar SVF Russ 184B

Sitz Everelda Entense 1137

CED	BW	WW	YW	Milk	Marb	REA	\$W	\$F	\$G	\$B
5	2.7	58	123	-1	.39	.46	15.88	60.85	25.26	64.98
5	3.7	54	93	17	.30	.28	24.17	30.60	26.63	47.06
Act. BW	Adj. WW	Adj. YW	Adj. IMF	Adj. REA	SC					
68	655	1132	-	-	-					



73

R&L KABOOM 8815

Birth Date: AAA: Tattoo: 8815

Jauer 353 Traveler 589 27

Jauer 7111 Traveler 353 719

Baldrige Kaboom K243 KCF

Jauer 6807 Traveler 27 085

Pleasant of Conanga 736

G T Maximum

B/R New Design 323

Pleasant Pill of Conanga

Masterfare Entense 3035

B/R New Design 036

Baar Everelda Entense 9225

B/R Ruby of Tiffany 155

Gdar SVF Russ 184B

Sitz Everelda Entense 1137

CED	BW	WW	YW	Milk	Marb	REA	\$W	\$F	\$G	\$B
5	2.7	58	123	-1	.39	.46	15.88	60.85	25.26	64.98
5	3.7	54	93	17	.30	.28	24.17	30.60	26.63	47.06
Act. BW	Adj. WW	Adj. YW	Adj. IMF	Adj. REA	SC					
61	702	1174	-	-	-					

74

R&L KABOOM 8826

Birth Date: AAA: Tattoo: 8826

Jauer 353 Traveler 589 27

Jauer 7111 Traveler 353 719

Baldrige Kaboom K243 KCF

Jauer 6807 Traveler 27 085

Pleasant of Conanga 736

G T Maximum

B/R New Design 323

Pleasant Pill of Conanga

Masterfare Entense 3035

B/R New Design 036

Baar Everelda Entense 9225

B/R Ruby of Tiffany 155

Gdar SVF Russ 184B

Sitz Everelda Entense 1137

CED	BW	WW	YW	Milk	Marb	REA	\$W	\$F	\$G	\$B
5	2.7	58	123	-1	.39	.46	15.88	60.85	25.26	64.98
5	3.7	54	93	17	.30	.28	24.17	30.60	26.63	47.06
Act. BW	Adj. WW	Adj. YW	Adj. IMF	Adj. REA	SC					
88	616	1145	-	-	-					

75

R&L NEW DESIGN 878 8818

Birth Date: 09/05/2008 AAA: 16549239 Tattoo: 8818

B/R New Design 036

V D A R New Trend 315

Bon View New Design 878

B/R Blackcap Empress 76

Bon View Gammer 8

Bon View Bando 598

N Bar Emulation EXT

Bon View Gammer 233

Silver Ridge Elba R&L

Emulation N Bar 5522

Silver Ridge Elba 9019

N Bar Primrose 2424

G D A R Oscar 711

Manns Silver Ridge Elba

CED	BW	WW	YW	Milk	Marb	REA	\$W	\$F	\$G	\$B
6	2.7	41	76	23	.21	.02	23.68	18.96	18.16	35.08
Act. BW	Adj. WW	Adj. YW	Adj. IMF	Adj. REA	SC					
77 (ET)	617 (ET)	1023 (ET)	3.47 (83)	11.7 (99)	-					



76

R&L NEW DESIGN 878 8819

Birth Date: 09/01/2008 AAA: 16549240 Tattoo: 8819

B/R New Design 036

V D A R New Trend 315

Bon View New Design 878

B/R Blackcap Empress 76

Bon View Gammer 8

Bon View Bando 598

N Bar Emulation EXT

Bon View Gammer 233

Silver Ridge Elba R&L

Emulation N Bar 5522

Silver Ridge Elba 9019

N Bar Primrose 2424

G D A R Oscar 711

Manns Silver Ridge Elba

CED	BW	WW	YW	Milk	Marb	REA	\$W	\$F	\$G	\$B
6	2.7	41	76	23	.21	.02	23.68	18.96	17.62	38.14
Act. BW	Adj. WW	Adj. YW	Adj. IMF	Adj. REA	SC					
68 (ET)	584 (ET)	1117 (ET)	3.89 (93)	12.1 (101)	-					



1019 Waterwood Pkwy, Unit D
Edmond, OK 73034
(405) 840-5461 Office
(405) 641-6081 Cell

PRESORTED
FIRST-CLASS MAIL
U.S. POSTAGE PAID
GARDNER, KS
PERMIT NO. 35

FIRST CLASS MAIL
DATED MATERIAL: PLEASE DO NOT DELAY

ANNUAL BULL SALE • MARCH 21 • 1 PM

Westmoreland, Kansas • 75 Bulls



R&L ANGUS HR